



SAFILTMOBILE® FEATURES

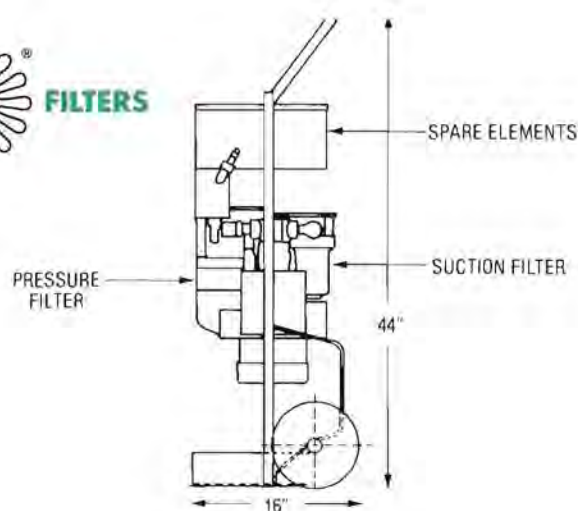
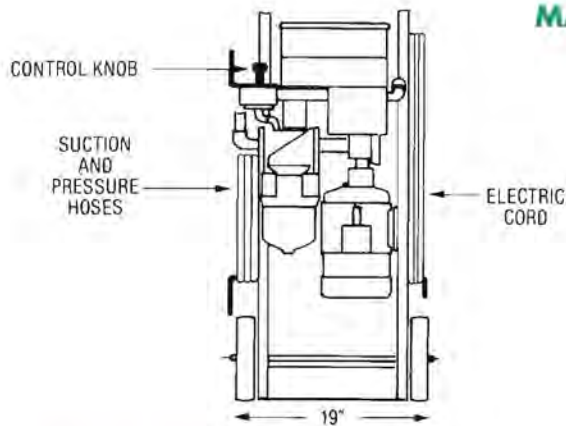
- ***Air or Electric Powered***
- ***Complete with Hoses, Electric Cord, and Spare Elements***
- ***Automatic Operation and Shut-Off***
- ***Disposable Filter Elements and Cleanable Suction Strainers***
- ***Shipment Within 3 Days***
- ***Shuts Off When Filters Clog or Oil Supply Depletes***
- ***Up to 600 Gallons Per Hour***

FILTERS/TRANSFERS HYDRAULIC OILS, COOLANTS AND LUBRICANTS



MARVEL ENGINEERING COMPANY

2085 N. HAWTHORNE AVE. • MELROSE PARK, ILLINOIS 60160-1173
PHONE 708-343-4090 • FAX 708-343-4159
Email: info@marvelengro.com • www.marvelengro.com



Specifications

	Electric Unit Model 986121A7110	Pneumatic Unit Model 978121-7110
Flow Capacity	7.5 GPM with 100 SUS Oil 7.0 GPM with 600 SUS Oil	10 GPM with 80 PSI Air Pressure (100 SUS Oil)
Filtration	Pressure: 10 micron Suction: 142 micron	Pressure: 10 Micron Suction: 74 Micron
Power	115V/230V AC, Single Phase 25 foot 3-Wire power cord provided 10.6 AMPS (115 VAC)	Shop Air 40 to 120 PSIG Male coupling provided 27 SCFM of 80 PSIG Air
Weight	145 LBS Dry	110 LBS Dry
Hoses	Suction: 1" I.D. x 10 ft. Pressure: 3/4" I.D. x 10 ft.	Suction: 1" I.D. x 10 Ft. Pressure: 3/4" I.D. x 10 FT.
	CAUTION: 10 foot maximum suction lift recommended	
Pump	Gear type with 25 PSID Integral relief valve	Gear type with 25 PSID Integral relief valve
Motor	3/4 H.P. 115/230 VAC, Single phase TEPC (Wired for 115 VAC)	Air Motor 40 to 120 PSIG
Start/Stop	Pressure sensitive switch Permitting automatic operation and shut-off	Pressure sensitive Automatic Operation and Shut-Off
Replacement Elements	Pressure filter: 576366-7110 Suction filter: 529206-1210	Pressure filter: 578366-7110 Suction filter: 560206-1220
Housing Seal	Pressure filter: 265000-3 Suction filter: 301000-3	Pressure filter: 265000-3 Suction filter: 301000-3

NOTE: Finer and coarser elements available—also elements for use with water glycol and PHOSPHATE ESTER Fluids—consult factory.

Simple Operation

Simply roll the SAFILTMOBILE® to location, insert end of suction hose into oil supply and end of pressure hose into your hydraulic system where desired.

Connect to power source—115VAC or shop air line depending on model.

Lift up "Start-Stop" control knob and hold until a solid stream of oil is visible in see-through discharge hose.

SAFILTMOBILE® shuts itself off automatically when oil supply is depleted or either filter element becomes heavily contaminated. To stop operation manually at any time, merely depress "Start-Stop" control knob and hold down until unit stops pumping.

Maintenance Instructions

Remove SAFILTMOBILE® from use and disconnect from power source.

To Change Pressure Filter Element:

- Drain filter bowl by removing 3/8" NPT plug on bottom of housing and drain housing.
- Remove four 7/16" bolts and separate housing from head of filter
- Slide element off boss on filter head and discard.
- Reverse this procedure to install clean element.
- A small amount of oil on boss assists installation.
- Also install a new housing seal if required.
- CAUTION:** Torque housing bolts 20 to 30 ft-lbs.

To Clean Suction Filter Element:

- Unscrew housing from head. Note hex boss on bottom of housing to assist removal.
- Slide filter element down from head and swish in any non-caustic solvent for a short period of time. A stiff fibre brush may be used to remove impacted deposits between pleats in the wire mesh. Use shop air, blowing from inside out. (Wear safety glasses)
- Inspect and replace housing O-Ring if required.
- Lubricate housing threads and O-Ring
- Install cleaned element and housing reversing procedure above.
- CAUTION:** Tighten housing 40 to 60 ft-lbs torque.

MARVEL ENGINEERING COMPANY

PHONE: 708-343-4090

FAX: 708-343-4159

2085 N. HAWTHORNE • MELROSE PARK, IL 60160-1173

Email: info@marvelengrco.com • www.marvelengrco.com

BULLETIN L8806-1E